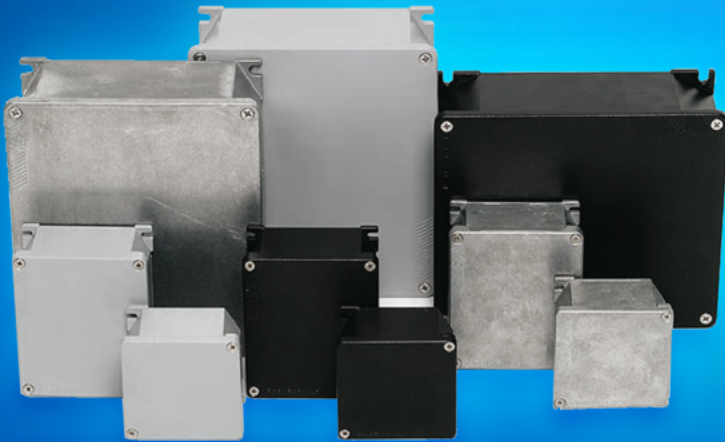


CAST ALUMINUM DISTRIBUTION BOXES



AP SERIES IP66/IP67

AC SERIES IP65



Currently Non-UL



Currently Non-UL

[AP SERIES]

[AC SERIES]

APV

RAL 7040
Textured
Version

APS

Unpainted
Version

APW

Extreme Temperatures
/ Salt Environments

M25/32

Metric Threaded
Cable Entries

22/30MM

Diameters of
Piercing Units

IP65

Removable Cover

+ EARTH TERMINAL

+ ACCESSORY KITS

+ EASIER INSTALLATION

+ CONVENIENCE



Both boxes and covers are supplied with provision for a terminal earthing connection to protect it from indirect contacts.

Accessory kits are available for fitting inside the boxes DIN rails or zinc-plated steel mounting plates.

The cover fixing screws become captive when the special o-rings are fitted.

A cover can be fitted to the box by using a special nylon string.

CAST ALUMINUM DISTRIBUTION BOXES

for explosive atmospheres



APX SERIES IP66/IP67

[APX SERIES FEATURES]



ATX boxes are made of EN AB 46100 aluminium alloy (previously UNI 5076) in accordance with standards UNI EN 1676 and oven-painted with RAL7040 epoxy-polyester resins.

- + Cover with pre-fastened gasket
- + Galvanized steel screws
- + O-ring in nitrile rubber
- + 1 internal equipotential bonding kit
- + 1 external equipotential bonding kit
- + Wall-mounting is possible
- + Kits for internal fixings is available on request



ZONE 2 ZONE 22

Area in which the explosive atmosphere is unlikely to form during the ordinary use of equipment and, if present, persist for a short period of time only

+ EX COMPONENTS



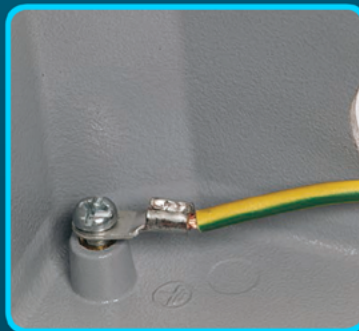
Suitable for explosive atmospheres classified as Zone 2 (gases) and/or Zone 22 (dust).

+ INSTRUCTION SHEET



Detailed information about installation, operation, maintenance, and the Attestation of Conformity are included.

+ EARTH TERMINAL



APX boxes are supplied with an external protective earthing and bonding terminal.

+ EASIER INSTALLATION



The cover fixing screws become captive when the special o-rings are fitted.